

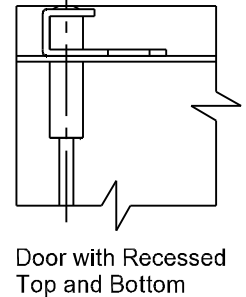
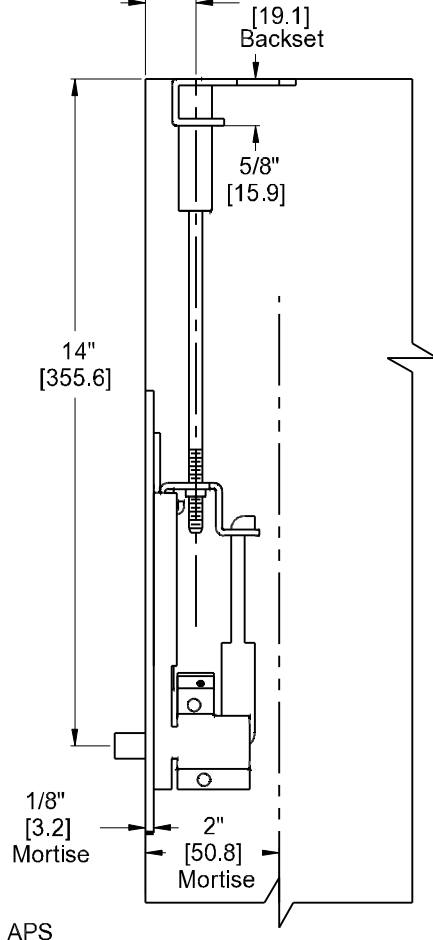
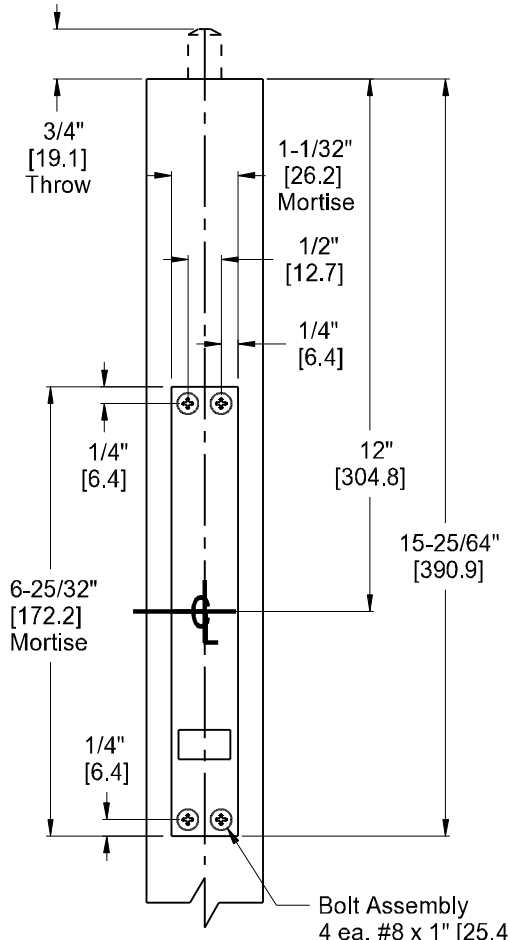
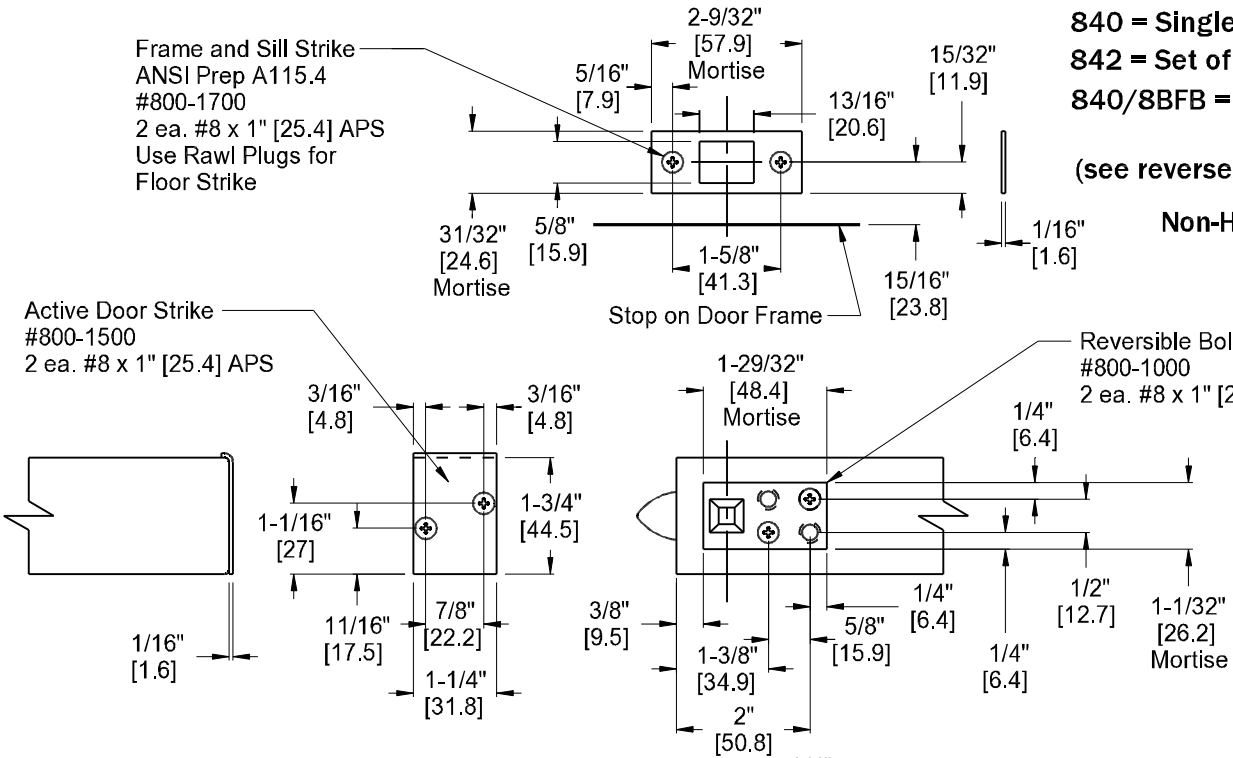
Frame and Sill Strike  
ANSI Prep A115.4  
#800-1700  
2 ea. #8 x 1" [25.4] APS  
Use Rawl Plugs for  
Floor Strike

840 = Single Bolt  
842 = Set of Bolts  
840/8BFB = 840 Top Bolt  
8BFB Bottom Bolt  
(see reverse side for 8BFB)

Non-Handed

Active Door Strike  
#800-1500  
2 ea. #8 x 1" [25.4] APS

Reversible Bolt Head Guide  
#800-1000  
2 ea. #8 x 1" [25.4] APS



NOTE: The Top Bolt details are shown. For Bottom Bolt, invert and measure from the bottom edge of the door.

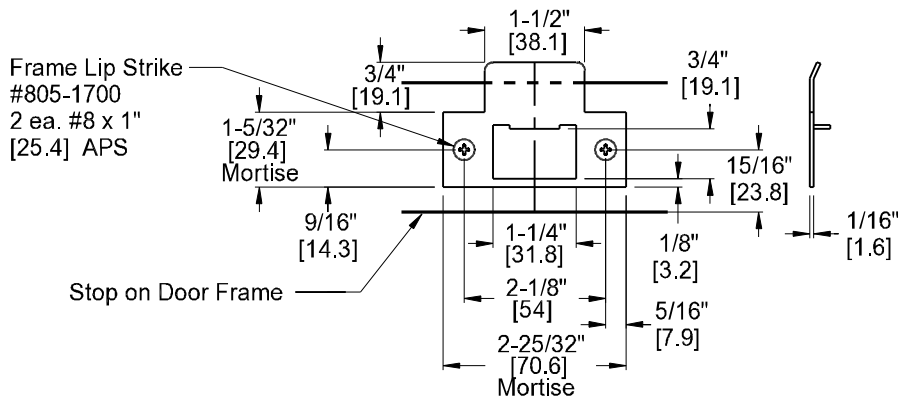
3/32" [2.4] thick Shims are available for the Active Door Strike. Part No. 800-1600

Dimensions in [ ] denotes millimeters

Bolt Assembly  
4 ea. #8 x 1" [25.4] APS



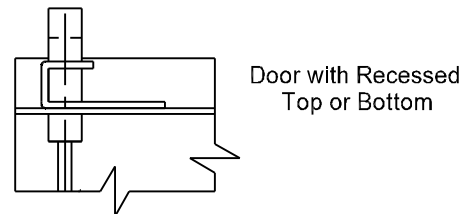
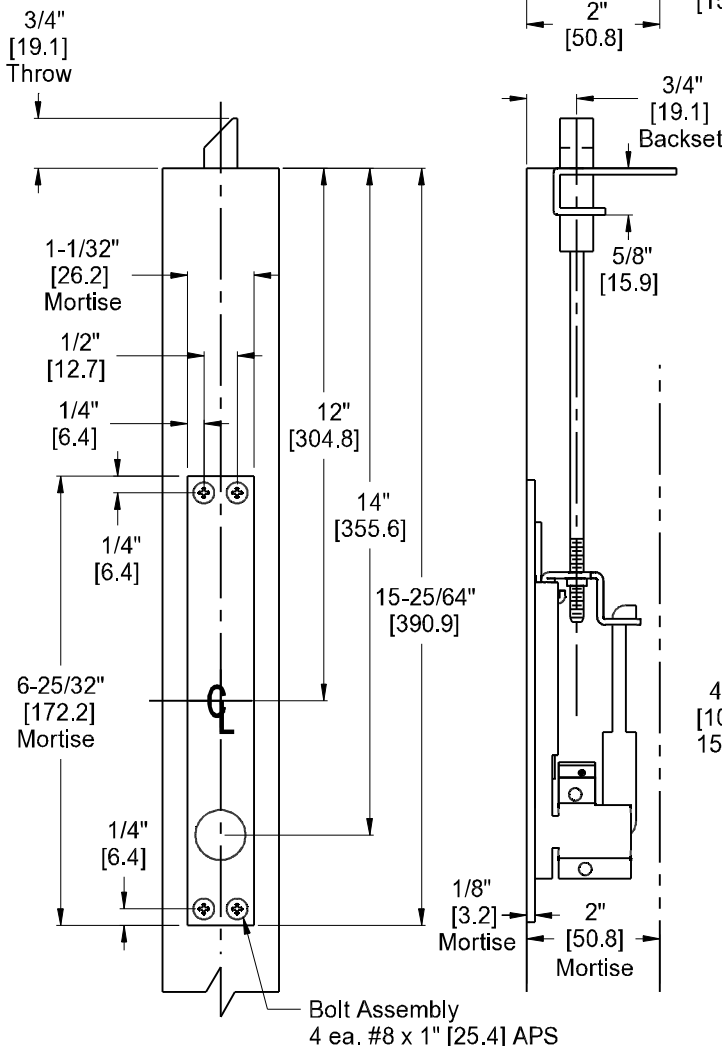
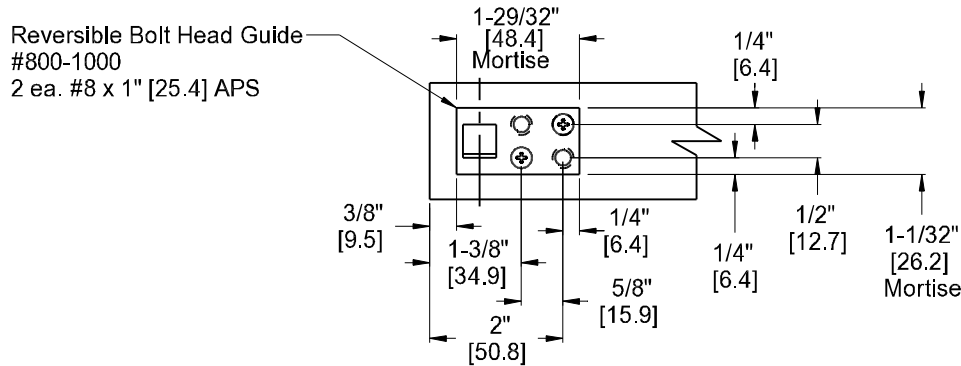
**DOOR CONTROLS INTERNATIONAL**  
2362 Bishop Circle East  
Dexter, MI 48130 U.S.A.



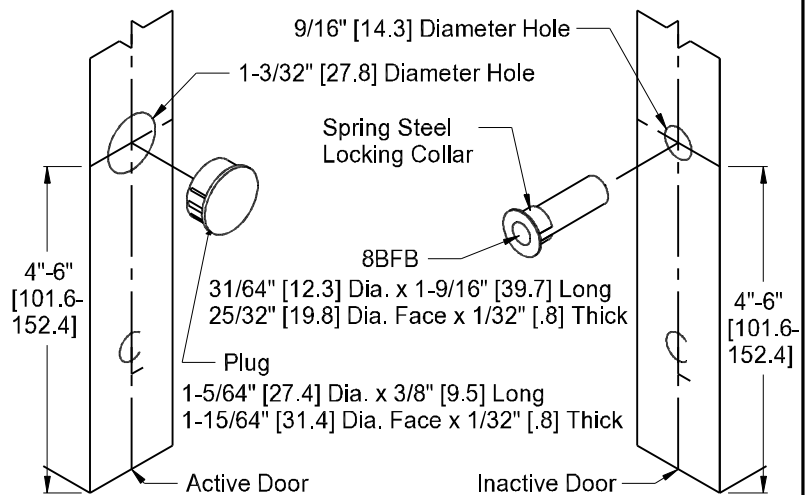
845 = 805 Top Bolt  
840 Bottom Bolt

805/8BFB = 805 Top Bolt  
8BFB Bottom Fire Bolt

Non - Handed



**8BFB Mounting Instructions**



**IMPORTANT:** The 8BFB will project during a fire. Do not cover with any edge mounted door hardware.

Dimensions in [ ] denotes millimeters