



08N-L, 08NE-L TRIM INSTRUCTIONS - CYLINDER INSTALLATION AND ASSEMBLY

CYLINDER INSTALLATION

LHR SHOWN

DO NOT ADD GREASE TO INTERNAL PARTS

EYE PROTECTION IS RECOMMENDED WHEN HANDLING LEVER SPRING

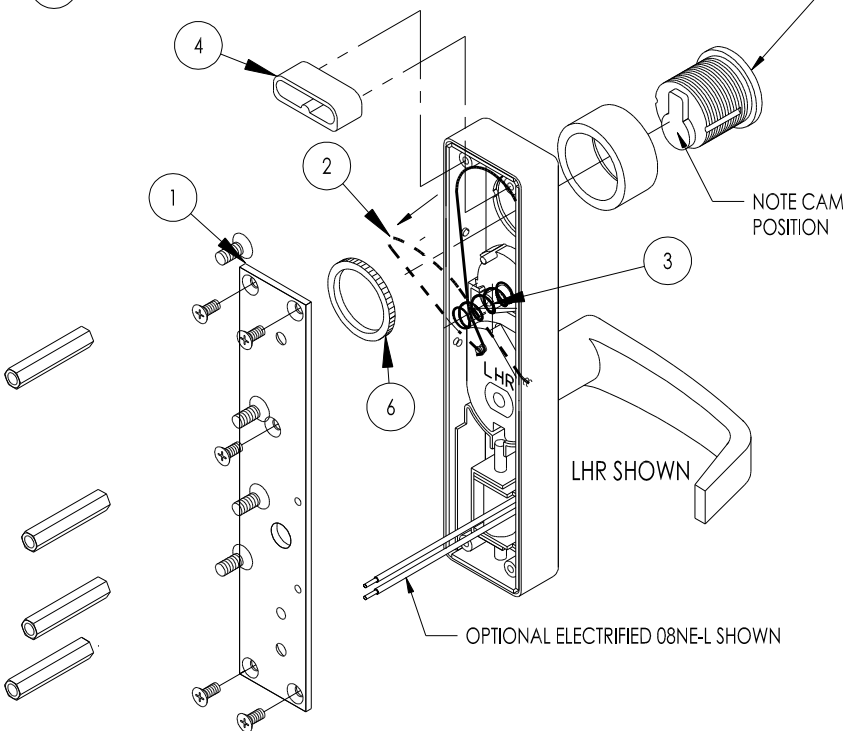
- 1 REMOVE BACK PLATE
- 2 TIP SPRING OUT, SQUEEZE TO REMOVE
- 3 REMOVE DETENT SPRING
- 4 REMOVE BLOCK FOR CYLINDER INSTALLATION
- 5 INSTALL 1 1/8" - 1 1/4" MORTISE CYLINDER WITH A STD. YALE CAM (.718" LONG)
- 6 INSTALL LOCK RING TO SECURE CYLINDER

5 CYLINDER SUPPLIED BY OTHERS

NOTE CAM POSITION

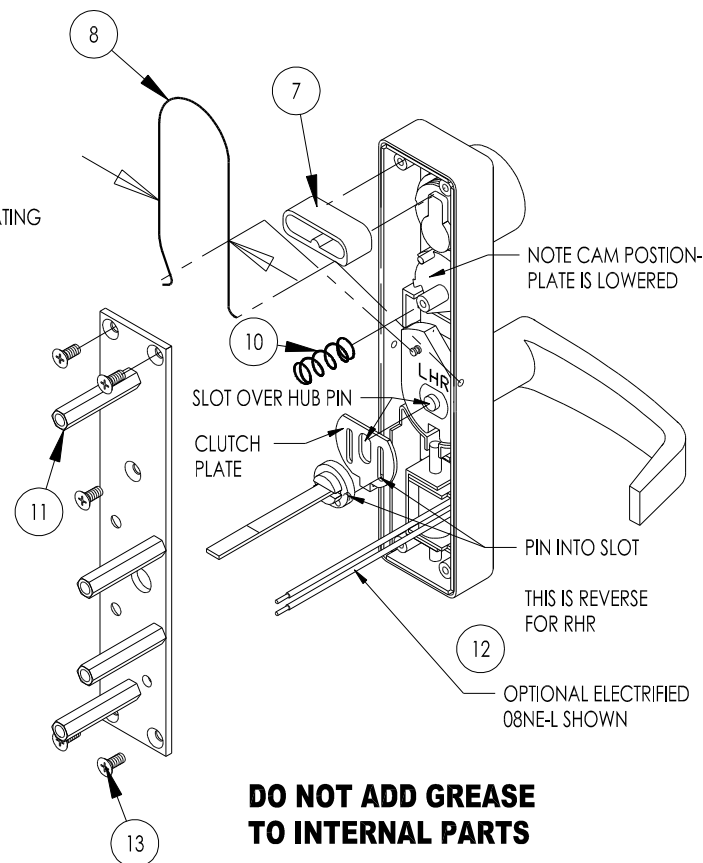
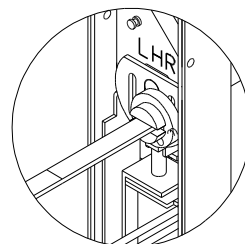
LHR SHOWN

OPTIONAL ELECTRIFIED 08NE-L SHOWN



TRIM REASSEMBLY

- 7 INSTALL BLOCK OVER STANDOFFS
- 8 INSTALL SPRING BY APPLYING PRESSURE TO BOTH SIDES OF SPRING. HOOKED END OF SPRING IS INSTALLED ON LEVER CAM. SEE INSET
- 9 INSTALL CLUTCH PLATE OVER HUB PIN. PLACE TAILPIECE ASSEMBLY OVER CLUTCH PLATE MATING THE PIN INTO THE SLOT
- 10 INSTALL DETENT SPRING OVER STANDOFF
- 11 INSTALL STUDS ON BACK PLATE WITH CENTER STUDS CLOSEST TO HANDLE SIDE (CENTER STUDS HAVE THREADS)
- 12 IF SUPPLIED, THREAD WIRES THRU BACK PLATE
- 13 INSTALL BACK PLATE WITH 5 EA. 8-32 MS



DO NOT ADD GREASE TO INTERNAL PARTS

WIRING INFO : 08E-L MODELS ONLY

24 VOLTS DC - NO POLARITY

.15 AMPS @ 20°C AMBIENT

DOOR CONTROLS INTERNATIONAL, DEXTER, MI
PH: 1-800-742-3634 FAX : 1-800-742-0410

12/2/05