



# HANDING INSTRUCTIONS - RHR PASSAGE FUNCTION

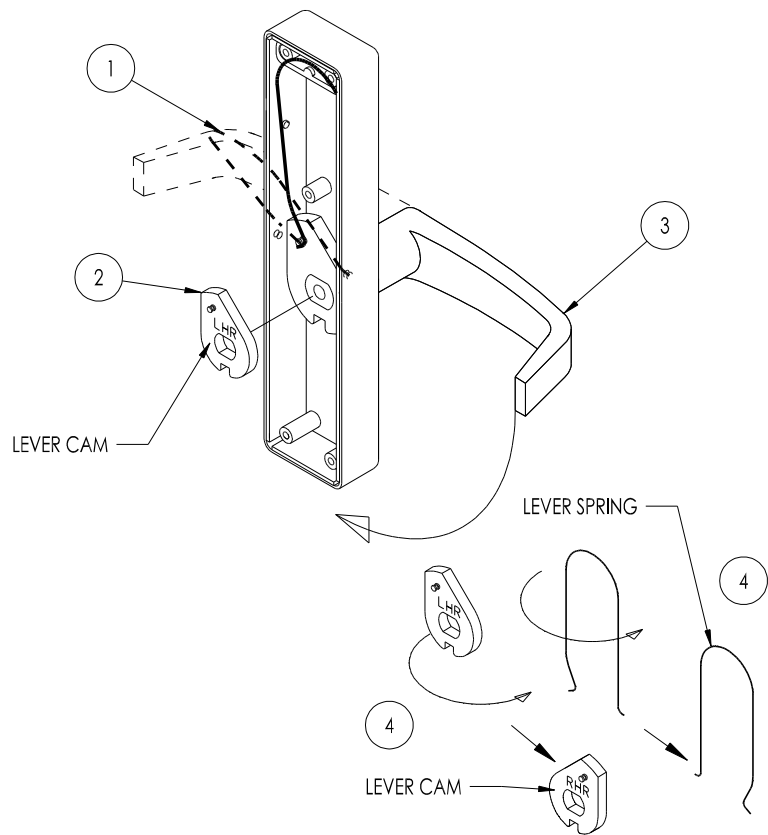
# ASSEMBLY INSTRUCTIONS- REVERSE SIDE

## HANDING INSTRUCTIONS - RHR

- 1 TIP SPRING OUT - SQUEEZE TO REMOVE
- 2 REMOVE LEVER CAM
- 3 ROTATE HANDLE CLOCKWISE 180 DEGREES
- 4 FLIP LEVER CAM AND LEVER SPRING AS SHOWN BELOW

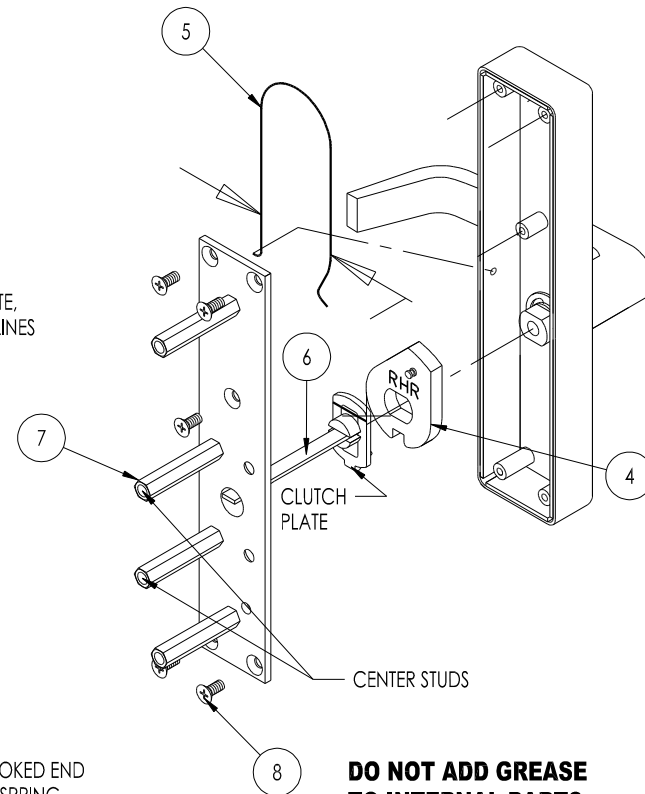
EYE PROTECTION IS RECOMMENDED  
WHEN HANLING LEVER SPRING

**DO NOT ADD GREASE  
TO INTERNAL PARTS**

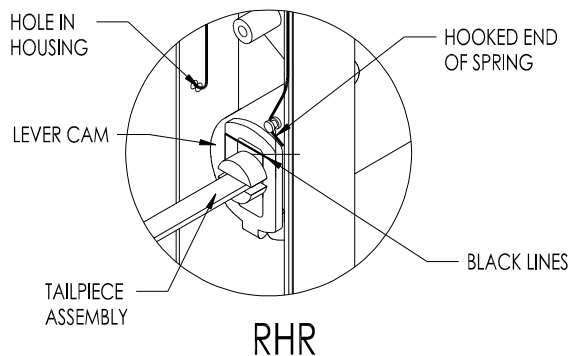


## TRIM REASSEMBLY

- 4 INSTALL LEVER CAM WITH "RHR" SHOWING
- 5 INSTALL SPRING BY APPLYING PRESSURE TO BOTH SIDES OF SPRING. HOOKED END OF SPRING IS INSTALLED ON LEVER CAM. SEE INSET
- 6 INSTALL TAILPIECE ASSEMBLY INTO CLUTCH PLATE, THEN INSTALL INTO LEVER CAM. NOTE: BLACK LINES MUST MATCH UP ON ASSEMBLY. SEE INSET
- 7 INSTALL STUDS ON BACK PLATE WITH CENTER STUDS CLOSEST TO HANDLE SIDE
- 8 INSTALL BACK PLATE WITH 5 EA. 8-32 MS



**DO NOT ADD GREASE  
TO INTERNAL PARTS**



DOOR CONTROLS INTERNATIONAL DEXTER, MI  
PH# 1-800-742-3634 FAX 1-800-742-0410